

Computer Monitors Service Bulletin

CSI-111

Sony Service Company - Technical Services
A Division of Sony Electronics Inc.
Sony Drive, Park Ridge, New Jersey 07656

Model: GDM20SE1, GDM17SE1

No. 89R1

Subject: Failure of Q511 on D Board due to CRT Arcing Date: August 8, 1995

Symptom: (131) No picture. Scan failure. Q511 failure on D Board .

Solution: In addition to Q511 replacement, Remove SG800 and add SG801 in new location on D Board as described below. This will protect Q511 from CRT arcing.

REF	FORMER		NEW	
	DESCRIPTION	PART NUMBER	DESCRIPTION	PART NUMBER
SG800	1500 V. SPARK GAP	1-519-422-11		
SG801			300 V. SPARK GAP	1-519-421-11

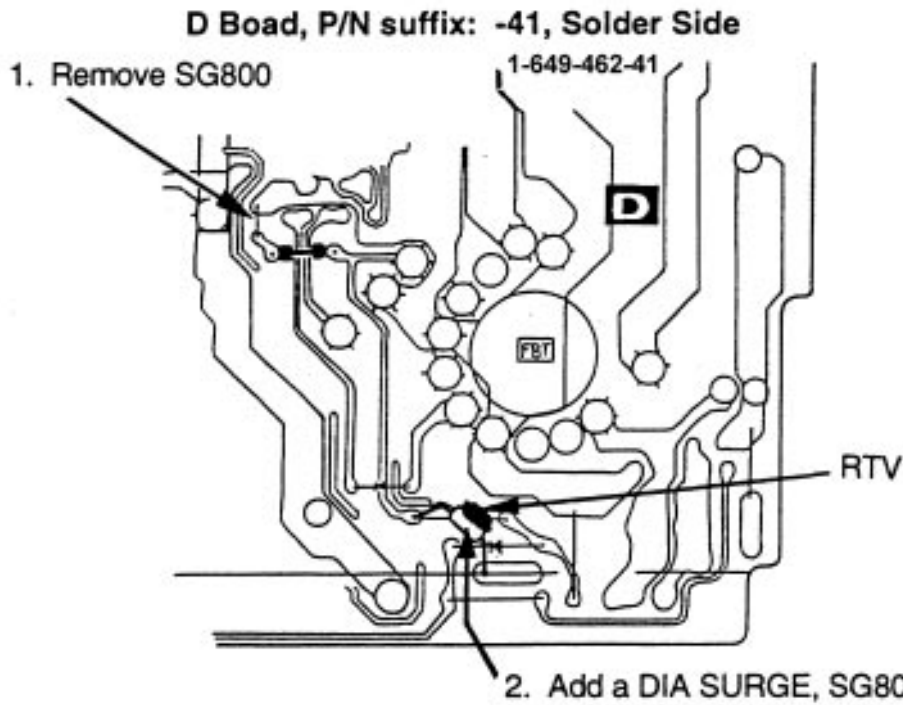
Procedure to remove SG800 and add SG801. See Figure below.

1. Remove SG800 Spark Gap.
2. SG801 will be soldered on the Soldering side of the D Board. Cut the leads of the SG801 as necessary. Solder one lead of SG801 to the land of R825. Solder the other lead of SG801 to the land of the Heatsink as shown.
3. Fix the body of SG801 to the D Board on the board near the FBT ground with RTV or similar adhesive.

cont.



Board, Part No. Suffix -11 to -42

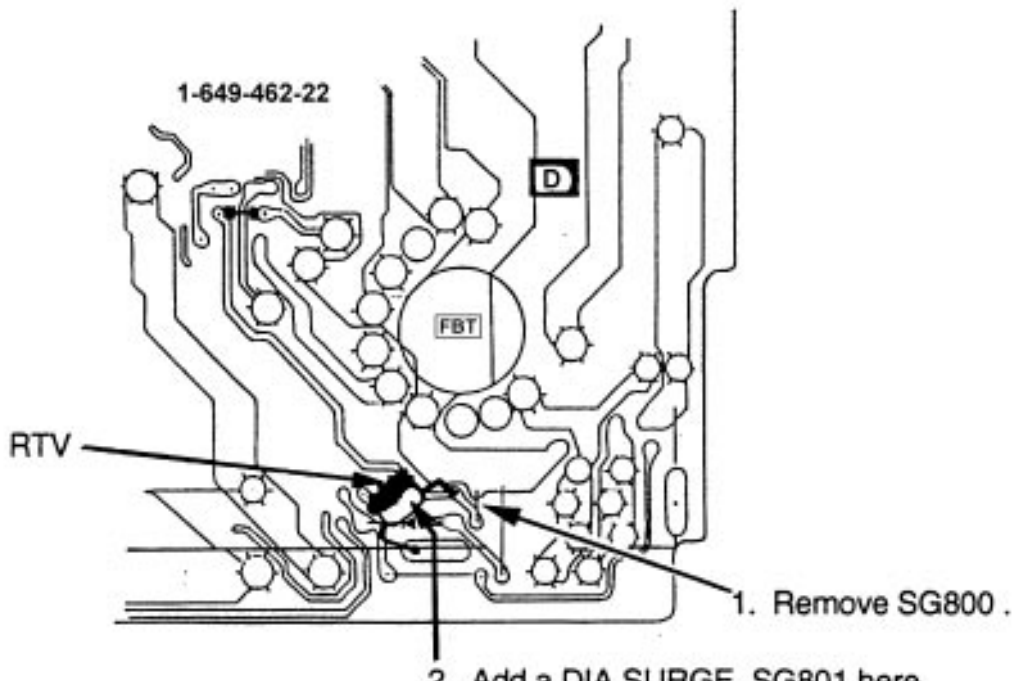


Perform modifications as shown according to the applicable foil pattern.

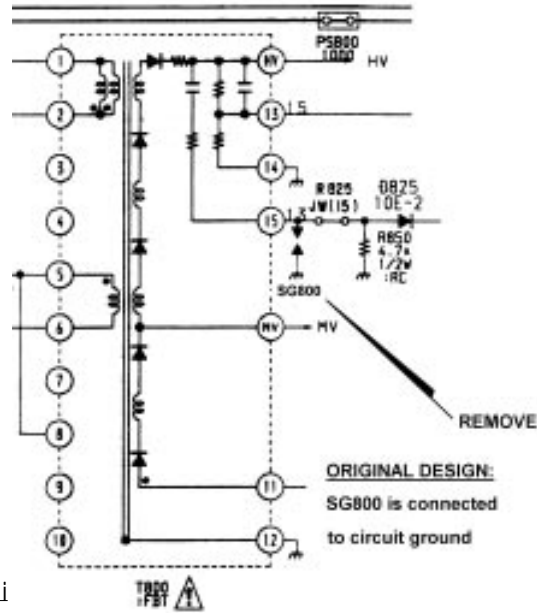
For other foil patterns, perform modifications according to the schematic changes described as follows. cont.

Board, Part No. Suffix -11 to -042

Schematic diagram changes.

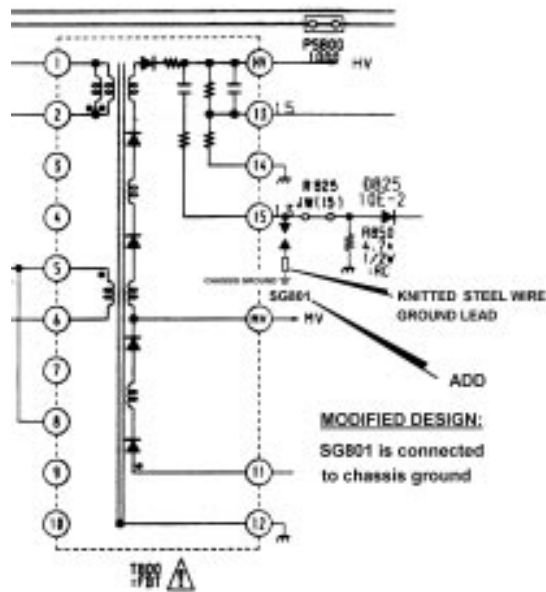


Original Design: SG800 is connected to circuit ground.



Modified Design: SG801 is connected to chassis ground.

Original Design: SG800 is connected to circuit ground.



Board, Part No. Suffix -43 and Higher

Do not modify. These units are updated in production.